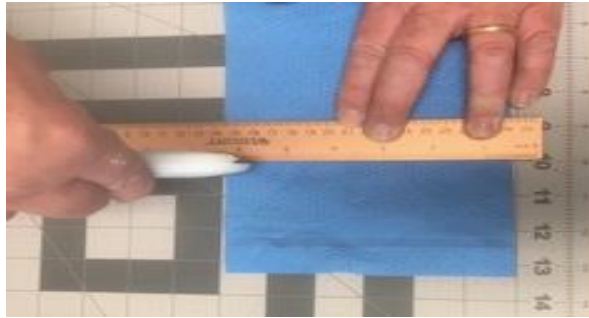


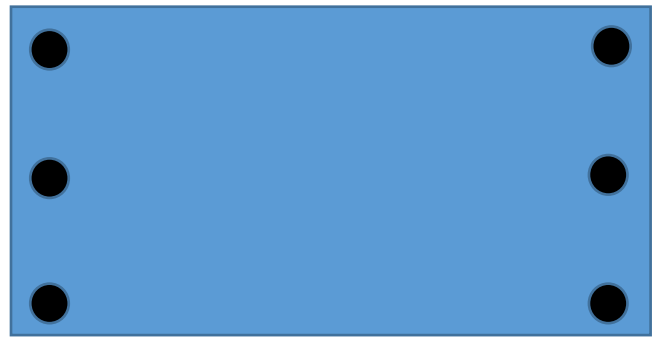
## N95 Blue Wrap Mask Covers

### 6 Width x 10 Length

1. Cut the 2 ply blue wrap material to 6 inches in width and 10 inches in length – separate the layers. Avoid using the seamed edges on the blue wrap.



2. Take one of the two rectangles (either the white or blue layer) and punch three holes at each end of the rectangle using a hole puncher.



3. Cut two pieces of twine to 36 inches in length.
4. Lace the twine through the 3 punched holes and tie the ends together in a simple knot, repeat this for both ends.

